



2011 JUNIORS RETREATS



DATE	SPEAKER	MUSIC
Nov 4-6, 2011	Nick Diliberto	KC and the Gloworms
Nov 11-13, 2011	Sean Sweet	Joe Vercellino
Nov 18-20, 2011	Patrick Snow	Dan Vukmirovich

↑ UPSIDE DOWN ↓

2011 Confirmation Packet Contents

Welcome Letter	2
Juniors Retreat Schedule	3
Schedule Explanation	4,5
Helpful Hints for Leaders	6
Sessions/Small Groups Information	7
Activity Information	8
Map of SpringHill Camp	9
Emergency Information	10
Group Game Explanations	11
Please fill out and return this page	
Group Breakdown/Group Game Form	12
Please print the following pages	
Leader Checklist	13
Packing List	14
Driving Directions	15
Michigan Camper Health Form	16, 17
Adult/Leader Liability Waiver for Retreats	18

↑ UPSIDE DOWN ↓

Philippians 2:3-11

5 In your relationships with one another, have the same mindset as Christ Jesus: **6** Who, being in very nature God, did not consider equality with God something to be used to his own advantage; **7** rather, he made himself nothing by taking the very nature of a servant, being made in human likeness. **8** And being found in appearance as a man, he humbled himself by becoming obedient to death—even death on a cross!

9 Therefore God exalted him to the highest place and gave him the name that is above every name, **10** that at the name of Jesus every knee should bow, in heaven and on earth and under the earth, **11** and every tongue acknowledge that Jesus Christ is Lord, to the glory of God the Father.

Mark 10:45

45 For even the Son of Man did not come to be served, but to serve, and to give his life as a ransom for many.

Dear Leader,

When Jesus came, preaching and healing and serving, it wasn't at all what the world was expecting. Jesus turned their idea of an earthly kingdom upside down and instead built a Kingdom based on humility and service. This year at Juniors', we'll focus on the concepts in Philippians 2:5-11 and Mark 10:45, and explore the example of Christ and his upside down Kingdom through age-appropriate teaching, fun interactive content, times for small group processing, and high energy praise and worship.

Your students' world will be turned upside down as they engage the story of Alice, who has found herself lost in a whimsical kingdom where everything isn't as it seems. Distracted by the glitz and glamor of the apparent king—who she thinks is her ticket home—she finds herself ignoring the true king, who comes in an unexpected form and was right beside her all along.

Read this Packet

This packet is loaded with information designed to be a helpful resource for you and your leaders as you prepare for your time at SpringHill. Please take time to read through the materials provided and praying for the kids you'll be spending the weekend with.

At the end of the packet, you'll find a Pre-arrival Form that will need to be filled out and faxed back to us in order to properly prepare for this event, as well as health forms and liability waivers to have your students and leaders complete before you arrive at camp. Your attention to the details and deadlines will help us serve you better and your check-in process to go smoothly.

Questions

There's a lot of information in this packet. If you have any program or activity-based questions, please contact Eric, and if you have any questions regarding housing or registration, please contact Missy. We can be reached at 231.734.2616.

We're looking forward to a great experience together!

Eric Woods

Program Retreat Manager



JUNIORS RETREAT TENTATIVE SCHEDULE

FRIDAY

4:00–8:00 pm	Limited Open Activities	Gym, Game Room, Pool, Gaga Ball, Zipline
6:30–7:30 pm	Optional Pizza Dinner	Dining Hall - \$6 additional per person
4:30–7:30 pm	Registration	Welcome Center
8:00–8:30 pm	Leader Meeting	Game Room
8:00–9:15 pm	Main Session	Olson Auditorium
9:15–10:00 pm	Small Groups	Assigned Locations
10:15–11:15 pm	Open Activities	Gym, Game Room, Pool, Gaga Ball, Zipline
11:30 pm	Lights Out	

SATURDAY

7:30–9:15 am	Breakfast	New Frontiers Dining Hall
7:30–9:15 am	Activity Signup	Endeavor Center
9:30–10:15 am	Main Session	Olson Auditorium
10:30–11:00 am	Small Groups	Assigned Locations
11:15 am–6:30 pm	Open Activities	Various Locations
11:15 am–6:30 pm	Large Group Games	As Assigned
2:00–3:00 pm	Leaders' Preteen Ministry Workshop with Speaker	Olson Auditorium
11:30 am–12:15 pm	Lunch A	Dining Hall
12:30–1:15 pm	Lunch B	Dining Hall
5:30–6:15 pm	Dinner A	Dining Hall
6:30–7:15 pm	Dinner B	Dining Hall
7:30–8:30 pm	Main Session	Olson Auditorium
9:00–10:00 pm	Small Group Campfires	Assigned Locations
10:00–11:00 pm	Late Night Activities	Night Zipline, Endeavor Center, Pool
11:15 pm	Lights Out	

SUNDAY

7:30–9:15 am	Breakfast	Dining Hall
9:30–10:30 am	Main Session	Olson Auditorium
10:45–11:15 am	Small Groups	Assigned Locations
11:30–1:30 pm	Open Activities	Various Locations
11:30am–12:15 pm	Lunch A	Dining Hall
12:30–1:15 pm	Lunch B	Dining Hall

TRADING POST HOURS

Friday: 5:00-8:00 pm

Saturday: 10:00 am-7:30 pm

Sunday: 7:45-9:15 am, 10:30-2:15 pm

SCHEDULE EXPLANATION

Registration/Move-In/Group Photo—4:30-7:30 pm Friday

When you pull into SpringHill, we will meet you at the entrance. After parking with the help of our staff, one leader will be directed to registration in the Welcome Center while your group will wait in the vehicles. After registering, your group will be escorted by SpringHill staff to your housing area. After you have moved-in have your group meet in the auditorium courtyard for your group photo. Your group can then participate in open activities until session begins. If you are running late and will arrive after 8 pm, please call SpringHill at 231.580.8144.

Early Arrival and Optional Pizza Dinner - This year, our Friday schedule has been expanded to give you the option of an early arrival and pizza dinner for your students and leaders. Activities will open at 4pm to give your kids more time to enjoy all of what SpringHill has to offer, with shorter lines!

Please specify on your Group Breakdown/Group Game Form the time you expect to arrive at camp and whether you want to opt in to the Pizza Dinner.

Activity Sign-up

There are an immense amount of activities at SpringHill. Only three of them require a sign up because of instruction and/or limited numbers. Some activities require an additional fee. Signup for activities will be held in the Gym Foyer on Saturday morning from 7:30-9:15. Activities fill on a first come, first serve basis.

In order to give everyone a great experience, some of our free activities will be limited to one turn per child.

The remaining activities will be available as “show-up,” which means you can go whenever it is open to participate. If it requires an additional fee, you pay there. If you want to pay with a credit card, vouchers are available in the Trading Post.

Leaders' Meeting

Leaders' Meetings are one of the most important factors in preparing you for a hassle-free weekend. Our Friday night meeting will be held from 8 to 8:45pm. During this important pre-session gathering, you will get acquainted with the SpringHill staff, get oriented with the weekend schedule, meet the musicians, and be given strategies to help your group get the most out of the weekend. Please plan to have all of your leaders attend. SpringHill staff will be on hand to give your students a great opening experience in Olson Auditorium during the meeting.

Large Group Sessions

There will be four large group sessions held in Olson Auditorium throughout the weekend. Sessions are geared to engage and reach each and every student with the gospel of Jesus Christ. Sessions are loaded with high energy, intense fun, dynamic messages, and talented musicians. We encourage leaders to sit and interact with their students during the session.

Small Group Discussions

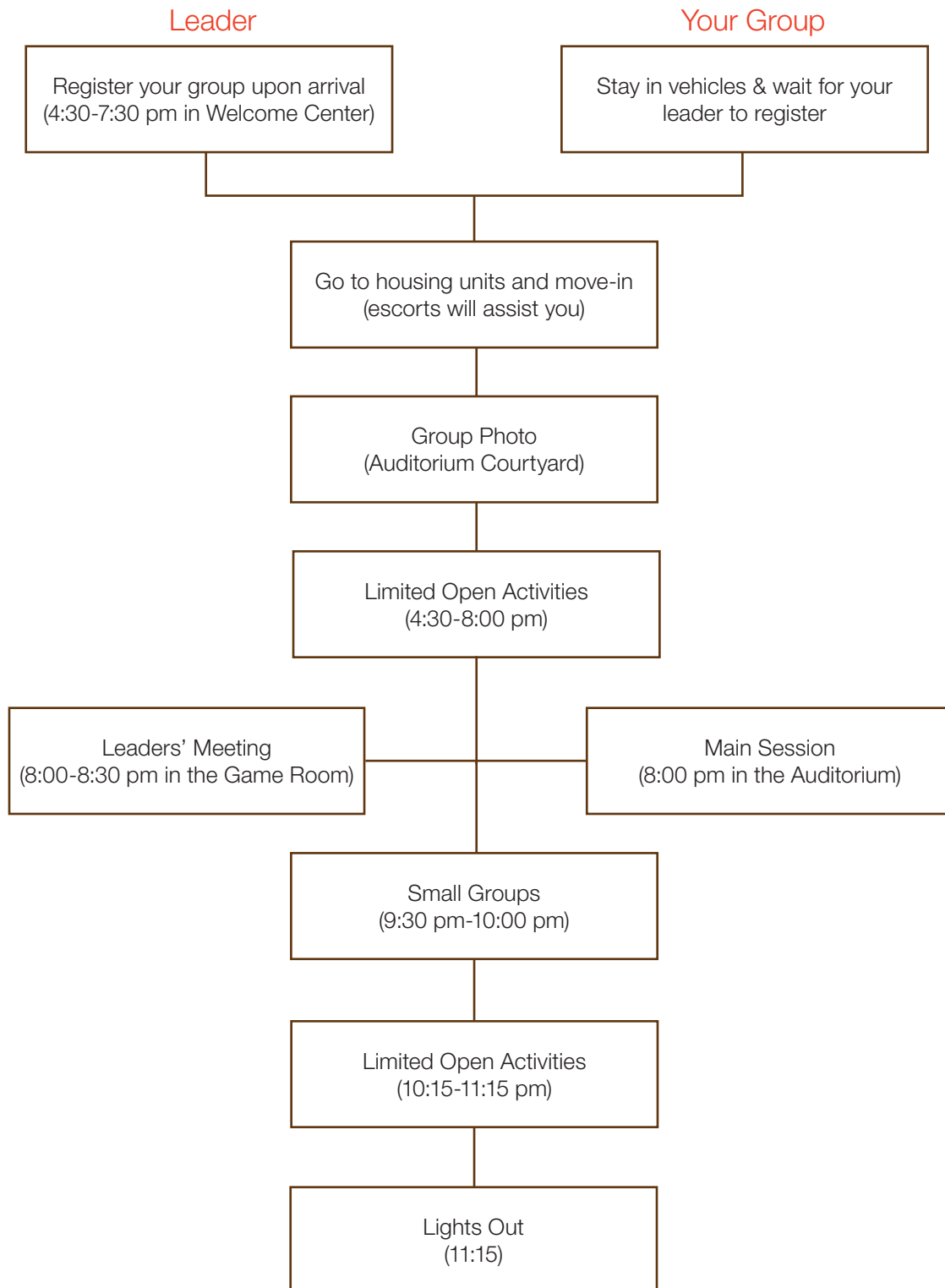
You and your leaders will be facilitating small group discussions with your students after each of the main sessions. This is a time when you can personalize the message for your students. A guide with questions designed by our speaker to support the messages will be emailed & posted on our web site a week before your event to help you connect the message presented in the main session to the students' lives. The focus of this time is to encourage students to share their thoughts and decisions, not necessarily for your commentary.

Large Group Games

This year we are offering a unique selection of Large Group Games. While there will still be a variety of activities for your kids to do independently, we will work with you to schedule one game for your whole group to participate in with other groups. Read the attached Large Group Game descriptions and, based on your group's preference, please rank them on your Pre-Arrival Form (Page 12). You will receive your Large Group Game assignment and time at Registration on Friday night.

↑ UPSIDE DOWN ↓

SCHEDULE EXPLANATION CONTINUED (Friday Night)



HELPFUL HINTS FOR LEADERS

Set Expectations For Your Students and Leaders

Students

Set behavior expectations for your group before you come. Make sure you have some practiced behavior management techniques at your disposal. It's a lot easier to accomplish your goals when everyone knows what's expected of them.

Leaders

Set expectations for your leaders. For your students to have an optimal experience with the leaders you bring, we suggest that leaders attend and participate in all of the main sessions, assign a specific group of students to each leader to be in their small group, and that they participate with their students at different activities through out the weekend. We don't require a leader be with every student at every activity. Have at least one leader in every cabin your students are assigned. We recommended 1 leader for every 7 campers. Your Leaders are the Counselors! Please note: SpringHill Staff is not responsible for the behavior management of your or any group's students.

Strategize Your Time

One-on-one time is critical. Have your leaders be intentional about getting to know the students in your group. Have them spend time playing, eating, and talking with students. Make relationship a priority!

Program Overview

Our programming this weekend is designed to capture your student's attention on Friday night through Saturday morning. From Saturday noon until the end of the retreat, our programming becomes more "behind the scenes" and your role increases in building deeper relationships.

Study the Map

We have more than 900 acres of property. If you have a good idea of the camp's layout, you will be able to help guide your students in finding their way around. Maps will be posted around camp to help you and your students.

Ask Lots of Questions

That's the best way to get started. Ask lots of questions, we will give you lots of answers. We want you to have a stress free retreat where your only responsibility is to have a blast with the students you bring. Let us know how we can help you!

Join Us in Prayer for the Weekend

- Pray that God will prepare the hearts of your students for what He has to teach them.
- Pray for our program team and the musicians as they prepare to share.
- Pray for our staff as we continue to make plans for this weekend and prepare the grounds.
- Pray for your students' spiritual decisions and hold them accountable to their commitments.

MAIN SESSIONS

This year at SpringHill you will be walking side-by-side with your students into an upside-down world. Together, you will discover how the example of Christ provides direction for each of us to live a life of humility and service. The time you spend together will provide memorable learning experiences, both on and off the stage, that will challenge your students to live that kind of upside-down life.

As a leader, you will play a crucial role in this life changing weekend, as you interact with your students in sessions, at activities, around the dining table, and as you facilitate small groups.

The following information should help you as you prepare for your weekend.

Session Content

We will have four sessions throughout the weekend. These will be interactive times for you and your students, including high energy worship, audience participation through games and skits, and the gospel presented through drama and by a team of talented speakers who join us from a variety of well-respected pre-teen ministries.

The drama will draw your students into a whimsical, upside down kingdom, where they will walk with Lilly as she comes to understand that everything isn't as it seems. Throughout the story, she will come to understand some key truths about the Kingdom of God and their contrast with the world around her as she interacts with the glamorous apparent king, the humble true king, and the zany game master.

On Friday evening, we will explore what it means to be in true relationships and have the mind of Christ, rather than be focused on our own needs and what is best for me (Philippians 2:5). On Saturday morning we will discover what it means to take the nature of a servant (Philippians 2:7) rather than to pursue the position of king. Then on Saturday evening we challenge students to humble themselves in obedience to Christ (Philippians 2:8), and give them an opportunity to make a new or renewed commitment to Christ. Our teaching will wrap up at Sunday morning's session with a look at what it means to exalt God in our lives and acknowledge him publicly (Philippians 2:9-10) and celebrate in worship all that God has done.

Scheduled Speakers/Worship Bands

November 4-6, 2011	Nick Diliberto	<i>preteenministry.net</i>	KC and the Gloworms	<i>gloministries.com</i>
November 11-13, 2011	Sean Sweet	<i>fourfivesix.org</i>	Joe Vercellino	<i>myspace.com/joevercellinomusic</i>
November 18-20, 2011	Patrick Snow	<i>ciy.com</i>	Dan Vukmirovich	<i>onethought.net</i>

SMALL GROUPS

Throughout the weekend, you will have the opportunity to lead a small group with the students you brought. Here are some suggestions on how to facilitate a successful small group.

The Goal

The goal of the small group time is to help facilitate a connection between the main session content and your students' lives, and lead them into deeper discussions. Kids can sometime feel overwhelmed in large group settings, so use this time to get to know them personally, to help them build strong bonds with other kids from your group, and to challenge them to consider questions about their lives that will ultimately lead them to make decisions about their relationship with Jesus Christ. Questions are provided on the following pages to help you make these connections. These questions follow a pattern of asking:

- ♦ What? Ask your kids to talk about what happened, what they saw, and what they learned.
- ♦ So What? Help your kids to express the implications of what they learned and how it affects their attitudes and feelings.
- ♦ Now What? Give your kids the opportunity to synthesize what they learned and how it made them feel, predict what might happen next, and make a plan to do something new or differently because of what they are learning.

Important Tips

- ♦ It is important that you remember to be a facilitator, allow the students to talk; don't tell them anything that they can tell you.
- ♦ Set expectations up front about when to speak and when to listen, where and how to sit, etc.
- ♦ Avoid commenting on your students' comments; encourage them to discuss what their peers are sharing.
- ♦ Try to turn questions directed at you back to the group for their input and discussion.
- ♦ Value every member of your group: affirm and protect each member.
- ♦ Respect the opinions of every member of your group.
- ♦ Don't be afraid of silence, give them time to think and answer.
- ♦ Be patient, do not get frustrated, give your students a chance to get used to you.
- ♦ Use the questions given as a guide, but feel free to follow the Spirit's leading as well.

ACTIVITY INFORMATION

Activity Sign-up for Horses, Paintball & Flying Squirrel: Gym Foyer - Saturday 7:30 - 9:15am

Climbing Wall—Free, Outdoor (weather permitting) or Indoor

If the mountain calls your name or you just want to be like Spiderman, our 40' Climbing Tower is for you. With four levels of difficulty ranging from the beginner to the expert this tower has a challenge for all.

Euro Bungy—\$5

Experience the adrenaline rush of bungee jumping as you perform gravity-defying maneuvers up to two stories high on our four station EuroBungy. Located in the Gym.

Flying Squirrel—Free (**sign-up required-availability is limited**)

Imagine this...two poles as tall as the sky with a pulley in-between them...a rope running through the pulley and we attach you to the rope...at the other end of the rope are 8-10 of your favorite friends, you run and they run in the opposite direction and you swing through the air like a...flying squirrel.

Gameroom—Free

The Gameroom is packed full of foosball, ping pong, and billiards tables. Ping pong balls can be purchased for \$0.25, and foosballs can be purchased for \$0.50. Decks of cards cost \$1.00. We also have a multitude of board games that can be borrowed. The Gameroom is a great place to hang out with friends or warm up with some hot chocolate.

Indoor High Adventure—Free

Our indoor high adventure activity area includes a climbing wall, a giant swing, and centipede. All located in the gym, these three elements are fun and challenging for any skill level.

Horseback Riding—\$10 per trail ride (**sign-up required-availability is limited**)

Explore the backlands of SpringHill on the back of a horse. We'll saddle them up, and you get to ride! Closed toe shoes, and long pants required.

Indoor Pool—Free

Check out our newly reonovated indoor pool.

Paintball—\$10 (**sign-up required-availability is limited**)

Gear up for a different adventure in the woods with a paintball marker and moving targets (a. k. a. your friends)! Long pants required.

Skate Park—Free

We've got the ramps, half-pipes, fly-boxes, rails, and verts. We've even got all the safety equipment needed for a great skate session. Bring your skates or borrow ours. Skateboards are available as well.

Solo Challenge—Free

It's just you on this challenge. You, the harness, a rope, and a 20' pole. Climb up to the top of the pole and jump for the trapeze. Can you do it? Step up and find out.

Sports—Free

With 3 basketball courts and 2 volleyball courts there's plenty of space and time to get in a few pick up games. All the equipment is out there. Just grab a few friends and go!

Target Sports—Free

Whether you're William Tell or Daniel Boone, test your skills with our target sports. Slingshots, archery, and riflery are being offered.

Copper Country and New Frontiers Zipline—\$5/ride - limited to one ride per child

The CoCo Zipline takes off and sails you, 756' feet over Lake Jasper on its 6 lines! The NewFro Zipline boasts of eight lines, 1000' feet long, 18 mph, and 45 seconds of pure adrenaline.

CRAFTS:

Beads and Hemp—Free

The Craft House offers time to relax and make a cool necklace with beads and hemp. Don't know how? Don't worry, we'll be there to show you.

Candle Making—Free

Make a cool candle in the craft house. There are lots of colors to chose from as well as some forming tools available to shape your custom made candle.

Tie - Dye—\$4-\$10

If being creative is your game, our craft house offers some hands on projects to personalize some souvenirs from your SpringHill Experience. The world is your canvas!

MAP OF SPRINGHILL



Retreat Housing

Norway (F4)

1. Fox
 2. Muskrat
 3. Wolverine
 4. Porcupine
 5. Bobcat
 6. Wolf
 7. Bear
 8. Deer
 9. Moose
 10. Elk
 11. Coyote
- North & South

Meadowlands (D5)

1. Heartleaf
 2. Coralroot
 3. Calypso
 4. Wintergreen
 5. Clover
 6. Trillium
 7. Primrose
 8. Chicory
 9. Columbine
 10. Fireweed
 11. Foxglove
 12. Snapdragon
 13. Sunflower
- East & West

Peaks (C6)

1. Longs
2. Hood
3. Harvard
4. Pikes
5. Whitney
6. St. Helens
7. Shasta
8. Rainier

Activities (3-10)

Blobs (B4)

- BMX Track (B7)
- Climbing Wall (D4)
- Courts (C7)
- Endeavor Ctr. (D7)
- Extr. Sports Park (D9)
- Flying Squirrel (D3)
- Gusher (C5)
- Gym (D7)
- High Ropes CC (D4)
- High Ropes NF (A7)

Aztec Village (B11)

1. Azcapo
2. Cholula
3. Tenochtitlán
4. Tula

TownHouses (A5)

1. Antioch
2. Berea
3. Corinth
4. Damascus
5. Mercury
6. Gemini
7. Atlantis
8. Apollo

Lothlorien (C10)

1. Eäruwen
2. Rumil
3. Celeborn
4. Elrond
5. Galadriel
6. Amroth
7. Haldir
8. Orophin

Freedom Hall (D8)

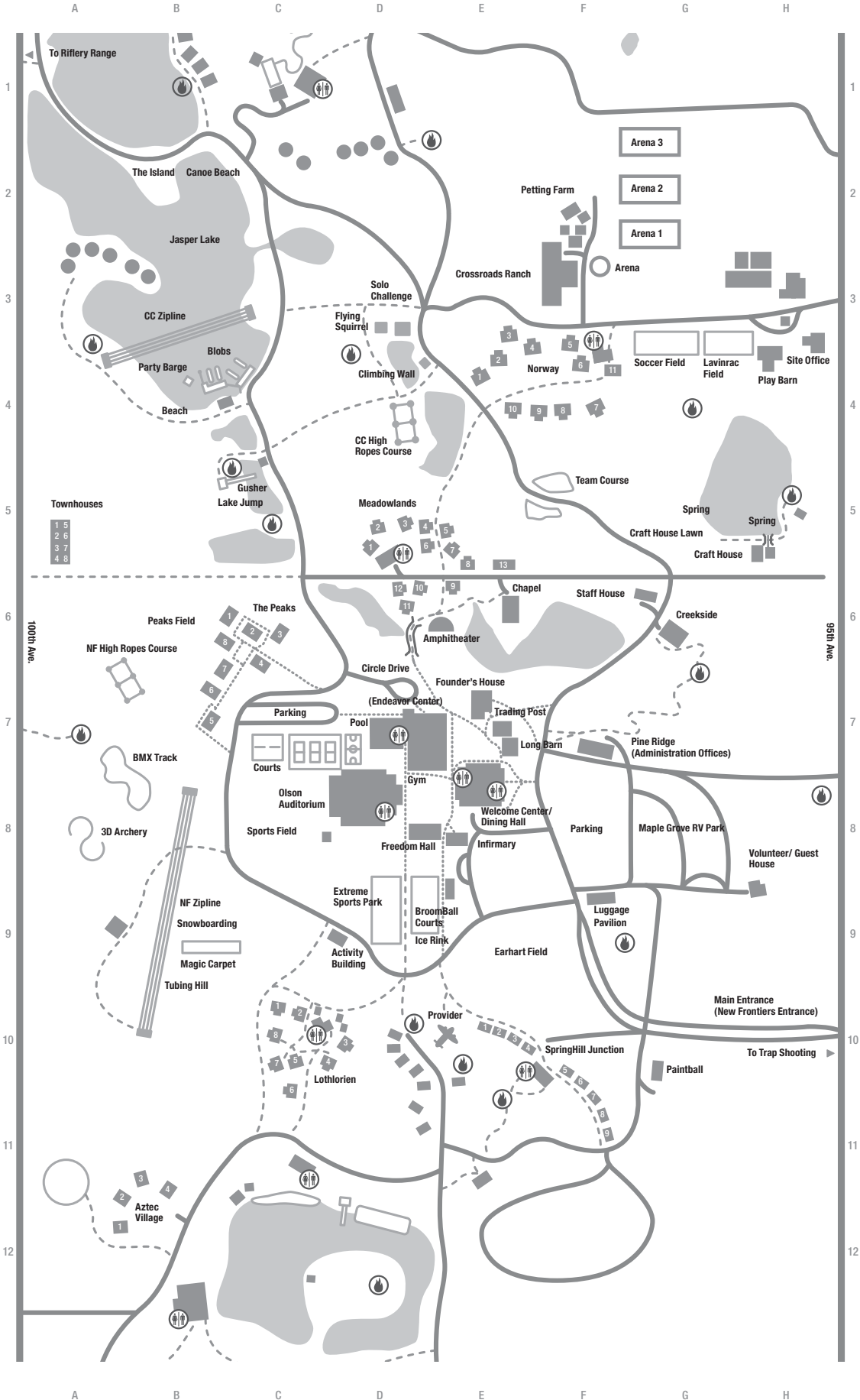
- ### Provider (E10)

SpringHill Junction (F10)

1. Michigan Central
2. Union Pacific
3. New York Central
4. Pere Marquette
5. Canadian National
6. Algoma Central
7. C&O
8. Santa Fe
9. Grand Trunk

Key

- Restroom
- Bridge Path
- Fire Pit
- Foot Path
- Sidewalk
- Road



EMERGENCY INFORMATION

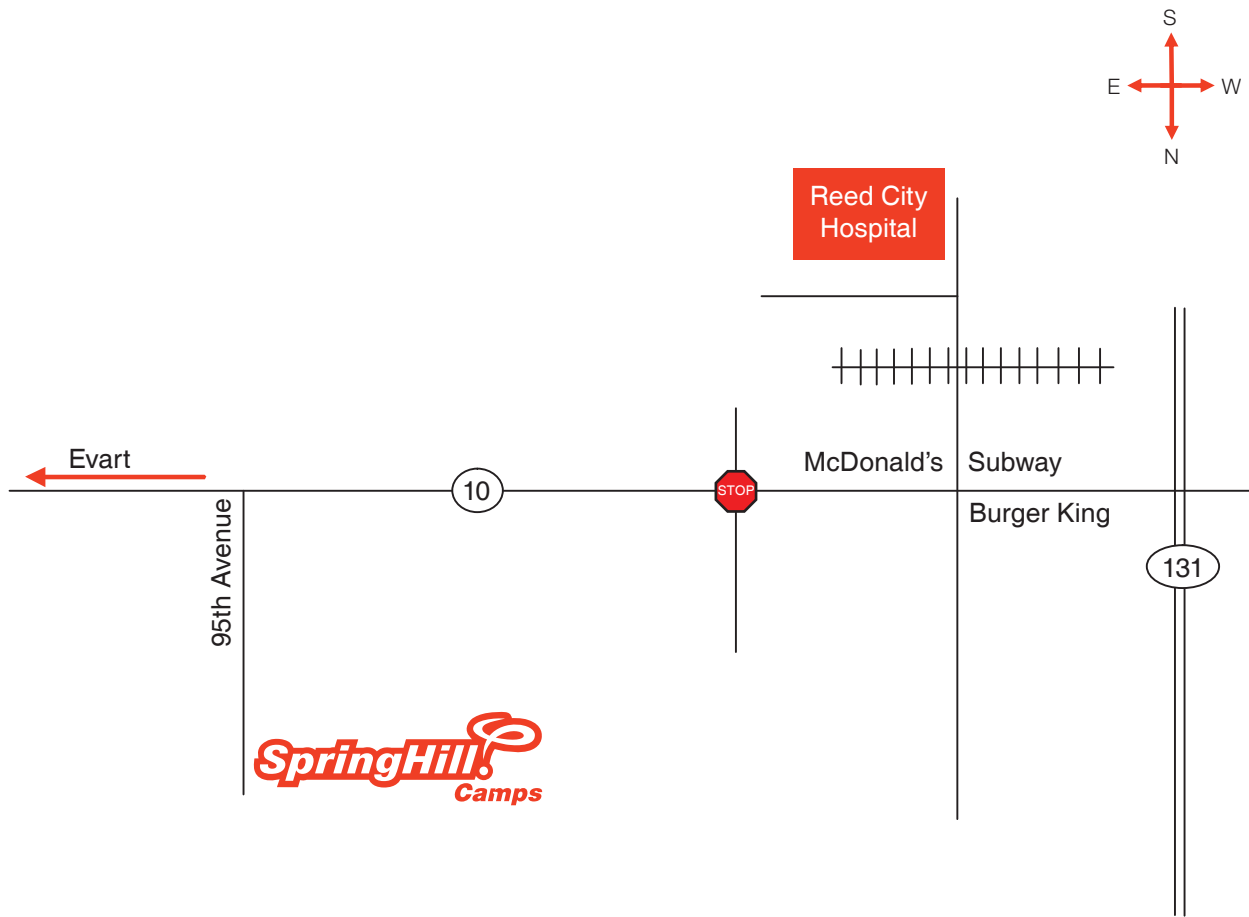
SpringHill does not employ any medical personnel during the non-summer months. Therefore, we hope this information will be of use to you. Should an emergency occur, one of our hosts will be available to assist you. During the day, our staff can be located by radio. At night, please call the on-call host phone at 231.580.8144. A phone is located in the Welcome Center for local calls only (dial '9' first). All Student Health/Power of Attorney forms will be kept on file and are available by contacting a host.

Ambulance/State Police/Fire: 911

Reed City Hospital: 231.832.3271

Minor Emergencies: A first aid kit will always be available in the New Frontiers Infirmary. Some members of camp staff are trained in first aid should you need assistance.

Serious Emergencies: SpringHill staff cannot transport injured guests; therefore, you will be responsible for transportation to and from Reed City Hospital (231.832.3271), which is the closest facility for after hour emergencies.



↑ UPSIDE DOWN ↓

GROUP GAMES

Please review the games below and rank in order of your group's preference (1st, 2nd, 3rd, 4th) on your Group Breakdown/Group Game form (page 12) and fax it to us at least 7 days prior to your Retreat.

Your group will be assigned to at least 1 group game. If you have less than 20 people, we may group you with another church.

Upside Down Dodge ball 20-30

It's every man for himself as you step into the pit. The octagon is not a place for the faint hearted as you take part in the most epic version of Dodge ball ever to take place at Springhill camps. Take some time to hone your skills as you combine handball and dodge ball in an effort to be the last man standing.

Football, Futbol 20-50

Take the rules of soccer, now eliminate the goalies and soccer ball and add in a football. That is a recipe for an amazing game of "Football, Futbol". Be sure to work on your footwork before you arrive because you never know what direction the ball will go in your effort to work as a team and outscore your opponent.

Upside Down Kickball 20

It's pretty simple hit the ball as far as you can, and run to the base and back without getting tagged by the a ball. O did we say ball? We should have said avoid getting tagged by the balls, plural. That's right unlike your normal kickball there will be 3 batters up to bat at once. That means three balls to avoid as you strive to score the most runs.

Noodle Hockey 20-40

Taken from the battlefield of our broomball season, noodle hockey comes to you for the very first time ever at Springhill. Prepare for an epic clash as you and your teammates fight to outsmart and outscore your opponents using only a regular pool noodle.

GROUP BREAKDOWN GROUP GAME FORM 2011 JUNIORS RETREATS



Dear Youth Leader,

Please complete this form and fax it to 231.734.0045 at least **7 days prior to** your scheduled retreat, submitting your final breakdown of the numbers. Thanks for being prompt in getting this back on time.

Name of group _____ Name of leader _____

RETREAT DATES November 4-6, 2011 November 11-13, 2011 November 18-20, 2011

Note: You are responsible for your pre-reserved numbers and full payment is expected for that number.

Number of boys _____ Sponsors for boys _____

Number of girls _____ Sponsors for girls _____

Total group number _____

Type of transportation to SpringHill _____ Estimated arrival time _____

Reminder: When packing vehicles, separate boy/girl luggage for easier unloading upon arrival.

Optional Friday Night Pizza Dinner (\$6 per person)

Will your group be participating in the Pizza Dinner? Yes No (6:30 - 7:30pm)
(payment for pizza is due in advance, and is not refundable)

Group Game

Please rank in order of your group's preference (1st, 2nd, 3rd, 4th). Your group will be assigned to 1 group game.

_____ Upside Down Dodge ball (20-30 people) _____ Football, Futbol (20-50 people)

_____ Upside Down Kickball (20 people) _____ Noodle Hockey (20-40 people)

Stage Games

You may also email your names to registerMI@springhillcamps.com

We are looking for students that would love to participate in fun, messy and interactive games on stage. Please note that names written down on this sheet may or may not be called up to the stage (depending on time and numbers).

Boy contestant names

Girl contestant names

- | | |
|----------|----------|
| 1. _____ | 1. _____ |
| 2. _____ | 2. _____ |
| 3. _____ | 3. _____ |
| 4. _____ | 4. _____ |
| 5. _____ | 5. _____ |

Leader Contestant Name

- | | |
|----------|----------|
| 1. _____ | 2. _____ |
|----------|----------|

Once all the information is provided, please fax to SpringHill: 231.734.0045, or mail to:
SpringHill Camps PO Box 100 Evert, MI 49631 **Please return 7 days prior to your retreat!**

↑ UPSIDE DOWN ↓

LEADER CHECKLIST

At least 7 Days Prior to Event

- Are you paid in full? Balance is due 7 days prior to retreat. (You will receive housing assignments upon arrival.)
- Fax your group breakdown/group game form to 231.734.0045 (page 12).

Prior to Arriving at Camp

- Signed and witnessed Adult Liability form for EVERY adult.
- Determine goals for your group (How do you plan on using this weekend in your overall ministry?)
- Bring a signed and witnessed Student Health/Power of Attorney form (two pages) for EVERY student.
If any of your teens have severe food allergies, please contact us at 231.836.1047.
- Pray (set the tone for the weekend.)
- Establish and communicate expectations for your students and leaders.
- Assign students to a responsible leader. (This may also dictate their small group.)
- When packing vehicles, separate boy/girl luggage for easier unloading upon arrival.
- Mention to your drivers that it will take 30 minutes to get everyone settled once on camp, remain in vehicles until approached by a staff member.



↑ UPSIDE DOWN ↓

PACKING LIST

- Signed and witnessed Student Health/Power of Attorney form for every student
- Signed and witnessed Adult Liability form for every adult
- Seasonally appropriate clothing (we recommend a lot of layers)
- Raincoat or warm coat (fun happens sun, rain or snow!)
- 2 pair of shoes (at least 1 pair of gym shoes, most activities require closed-toed shoes)
- Underwear (at least one pair!)
- Socks
- Shower stuff and towel
- Swimsuit and towel
- Sleeping bag and pillow
- Flashlight
- Your BIBLE and a journal
- Money for some activities, crafts, souvenirs, and band merchandise

Things to leave at home

(SpringHill is not responsible for any lost, damaged or stolen items)

- Cell phones, iPods, MP3 players and video games
- Pets
- Homework
- Anything standing between you and what God has planned for you this weekend



↑ UPSIDE DOWN ↓

DRIVING DIRECTIONS

From Grand Rapids

Follow 131 North to US 10 (exit 153 East)

Turn right onto US 10 and follow 13 miles to Evert. Turn left on 95th Avenue at the blinking light. Follow for 2 miles and you'll see the entrance to SpringHill on the left. Follow the camp road to the parking lot across from the New Frontiers Dining Hall.

From Lansing

US 127 North to US 10 West

Merge onto US 10 West toward Ludington/Cadillac and follow 27 miles to Evert. Turn right at the blinking light at 95th Avenue. Follow for 2 miles and you'll see the entrance to SpringHill on the left. Follow the camp road to the parking lot across from the New Frontiers Dining Hall.

From Detroit

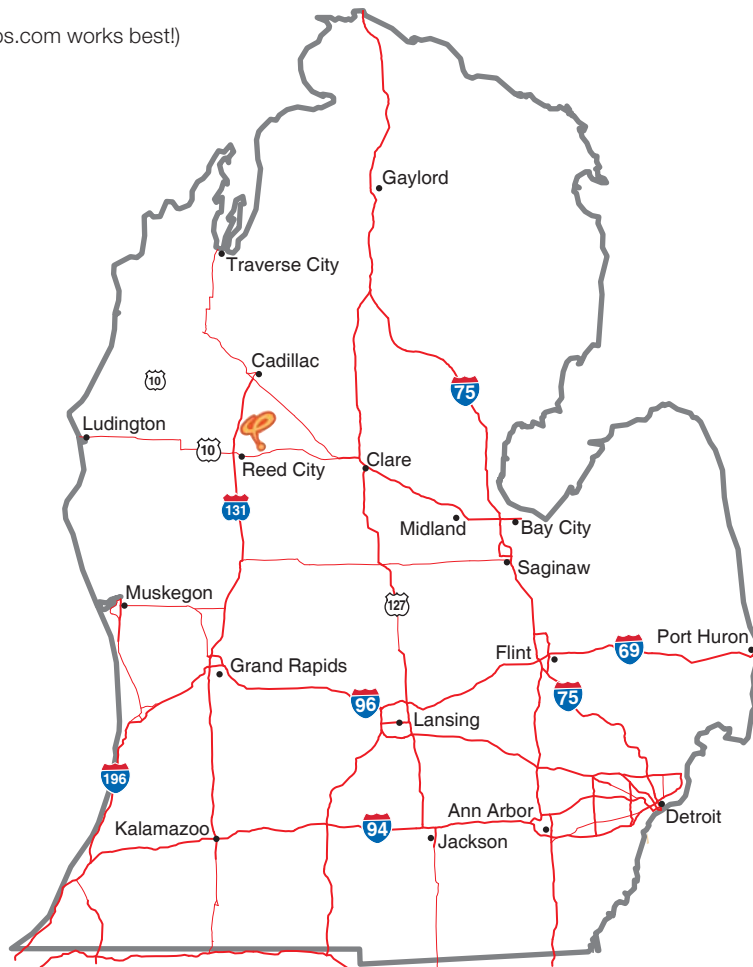
I 75 North to US 10 West

Merge onto US 10 West toward Ludington/Cadillac and follow 27 miles to Evert. Turn right at the blinking light at 95th Avenue and follow 2 miles. You'll see the entrance to SpringHill on the left. Follow the camp road to the parking lot across from the New Frontiers Dining Hall.

STREET ADDRESS (googlemaps.com works best!)

**7717 95th Ave.
Evert, MI 49631**

SpringHill, IN	428
Traverse City	85
South Bend, IN	200
Lansing	85
Grand Rapids	85
Fort Wayne, IN	242
Detroit	190
Columbus, OH	364
Cleveland, OH	340
Chicago, IL	290
Ann Arbor	185
SpringHill Michigan	Miles





2011 RETREAT CAMPER HEALTH FORM

PERSONAL INFORMATION

Camper's Last Name (Printed)		Camper's First Name (Printed)			M.I.
Street Address		Date of Birth (Month, Day, Year)			Age
City (Lbs)	State	Zip	Height	Weight	Gender <input type="checkbox"/> Male <input type="checkbox"/> Female

IMMUNIZATION RECORDS

If there are any religious or personal objections that do not allow your child to receive immunizations, you must sign a written statement below that you object to immunization, but certify that your child is in good health.

I have religious/personal objections, and my child is in good health. _____
Signature Date

Are your child's immunizations up to date? Yes No If no, please explain _____

MEDICATIONS/HEALTH HISTORY

Check if these apply to your child. If necessary, attach an additional page to describe health history in detail.

MEDICAL CONDITIONS:

- Asthma
- Cardiac Issues/Hypertension
- Diabetes
- Epilepsy
- OTHER _____

ALLERGIES:

- No known non-drug allergies
- Insect/bee/wasp stings
- Nuts: Mild Moderate Severe
- Fish/Shell Fish Eggs Milk
- Other (non-drug): _____

(if your child has a severe food allergy please contact our dining services at 231-836-1047 to make arrangements.)

MEDICATION ALLERGIES:

- No known medication allergies
- Has medication allergies
(List all medication names & describe reactions): _____

Precautions to be observed: _____

Operations or injuries: _____

MEDICATIONS:

Drug _____ Purpose _____ Dosage _____

Drug _____ Purpose _____ Dosage _____

INSURANCE INFORMATION

In the event of accident or illness, parents are completely responsible for any necessary treatment costs incurred.

List all personal insurance information or include a copy of insurance card(s).

Please mark "none" if your child is not covered by health insurance. None

Carrier or plan name	Carrier Address	Policy holder ID#	Name of policy holder
Group policy number		Carrier telephone	Relationship to camper

EMERGENCY CONTACT INFORMATION

Mother/Guardian name	Mother/Guardian home phone	Mother/Guardian cell phone
Father/Guardian name	Father/Guardian home phone	Father/Guardian cell phone
Family physician name	Family physician phone	Family physician city
Emergency contact name	Emergency contact phone	Relationship to camper

I. LIMITED PURPOSE POWER OF ATTORNEY: CONSENT TO TREATMENT OF A MINOR

A. The undersigned hereby appoint: _____ (Your Group Leader),
and _____ (Your Group Leader)

Todd Leinberger (SpringHill MI Director), Andy Hust (SpringHill Program Director), or Eric Woods (SpringHill Programed Retreats Manager) each to act alone, and delegate to each such person the power to consent on our behalf to all emergency treatment and/or medical care (except elective surgery) of _____ (Child's Name) determined to be necessary or desirable by the child's attending physician at the hospital. This consent does not impose a duty upon SpringHill or its representatives, to provide such assistance, transportation, or services. This Limited Purpose Medical Power of Attorney shall continue until revoked by the undersigned or for (thirteen) 15 months after its date, whichever is earlier. Physicians or the hospital's medical staff may assume and rely that this authorization is currently in effect during such thirteen month period unless notified. I also authorize SpringHill, or representative, as Medical Power of Attorney to have medical information disclosed to the representative of their choice. This is in compliance with HIPPA Privacy Rules which defines a Required Disclosure as "A covered entity must disclose protected health information to individuals (or their personal representatives) specifically when they request access to, or an accounting of disclosures of, their protected health information"

B. This Power of Attorney shall continue until revoked by the undersigned, or for six (6) months after its date, whichever is earlier. Physicians or the hospital's medical staff may assume and rely that this authorization is currently in effect during such six month period unless notified.

II. LIABILITY WAIVER

I recognize that certain hazards and dangers are inherent in the SpringHill events and programs and particularly, but not limited to, the activities of horseback riding, swimming, high adventure areas, paintball, extreme sports, winter tubing, snowboarding, ice skating, and cross-country skiing, and I acknowledge that although SpringHill has taken safety measures to minimize the risk of injury to participants, SpringHill cannot insure nor guarantee that the participants, equipment, premises, and/or activities will be free from hazards, accidents, and/or injuries. I further recognize and have instructed my child in the importance of knowing and abiding by the camp's rules, regulations, and procedures for the safety of activity participants.

In consideration of SpringHill accepting and permitting my child to attend camp and participate in the camp's high adventure activities, I agree that SpringHill, a non-profit corporation, its agents, officers, employees, trustees and volunteers will not be liable for any injury, death, damage and/or loss to my child, and/or anyone claiming on my child's behalf, and I further agree to hold harmless, indemnify and defend SpringHill, its officers, agents, employees, trustees and volunteers for and from any and all damage during the time of my child's attendance and participation at SpringHill, whether such injury, illness, or damage occurs on or off the camp's premises.

III. PHOTO RELEASE

I certify that photographs or videotape pictures of my child participating in the SpringHill programs may be reproduced and utilized in promotional materials for the camp.

DATED: Month _____ Day _____ Year _____

Father: _____ Home Phone (_____) _____
Name

_____ Cell Phone (_____) _____
Address

_____ City State Zip County

_____ Email Employer

Mother: _____ Home Phone (_____) _____
Name

_____ Cell Phone (_____) _____
Address

_____ City State Zip County

_____ Email Employer

I represent that I am the parent or legal guardian of _____ (child's name), that I am at least eighteen (18) years of age and I am under no mental or legal disability which would prevent me from signing and executing this agreement. I further represent that I have read (or have had read to me) and understood the terms of this agreement.

Father/ Guardian Signature Date Mother/Guardian Signature Date

Witness Signature Date Witness Address Witness City State Zip
(Signature must be witnessed by a person over 18 yrs old, other than your immediate family)



Adult/Leader Liability Waiver for Retreats

Retreat Attending _____ Dates _____

Church/Group Name _____

I recognize that certain hazards and dangers are inherent in the SpringHill events and programs and particularly, but not limited to, the activities of horseback riding, swimming, high adventure areas, paintball, extreme sports, winter tubing, snowboarding, ice skating and cross-country skiing, and I acknowledge that although SpringHill has taken safety measures to minimize the risk of injury to participants, SpringHill cannot insure nor guarantee that the participants equipment, premises, and/or activities will be free from hazards, accidents, and/or injuries. I further recognize the importance of knowing and abiding by the camp's rules, regulations, and procedures for the safety of activity participants. In consideration of SpringHill accepting and permitting me to attend camp and participate in the camp's activities, I agree that SpringHill, a non-profit corporation, its agents, officers, employees, trustees and volunteers will not be liable for any injury, death, damage and/or loss to me and/or anyone claiming on my behalf, and I further agree to hold harmless, indemnify and defend SpringHill, its officers, agents, employees, trustees and volunteers for and from any and all damage during the time of my attendance and participation at SpringHill, whether such injury, illness, or damage occurs on or off the camp's premises.

I certify that photographs or videotape pictures of myself participating in the SpringHill programs may be reproduced and utilized in promotional materials for the camp.

I am at least eighteen (18) years of age and I am under no mental or legal disability which would prevent me from signing and executing this agreement. I further represent that I have read (or have had read to me) and understood the terms of this agreement.

Group Name

Name

Address

City, State, Zip

Home Phone (_____) _____

Email

Signature Date

Witness Signature Date

Witness Address Witness City, State, Zip

(Signature must be witnessed by a person over 18 yrs old, other than your immediate family)